



Optos *Advance*TM Measuring Cup to Disc Ratio



Contents

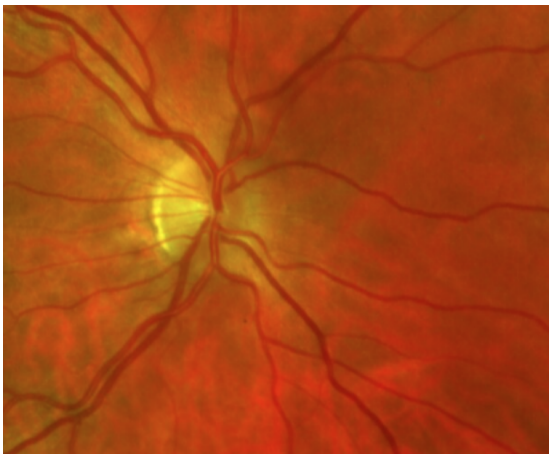
Purpose	1
Measuring Cup to Disc.....	1
Deleting Annotations.....	2

Purpose

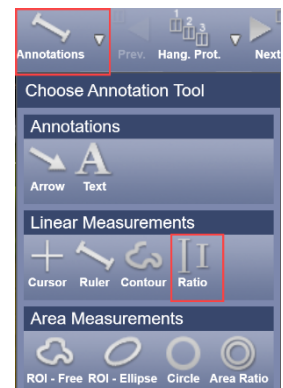
The purpose of this document is to provide guidance on how to measure the Cup to Disc Ratio in Optos*Advance*.

Measuring Cup to Disc

- 1 | Open the desired Patient Study.
- 2 | Zoom in on the optic nerve by clicking and holding your left mouse button and dragging away from you.



- 3 | Click the drop-down arrow beside **Annotations** to select a tool.
- 4 | Select the **Ratio** tool beneath the Linear Measurements header.
Two ratios will be shown:
 - From the shorter line to the longer line.
 - From the longer line to the shorter line.
- 5 | Click and hold the left mouse button from the top of the disc and drag the line to the bottom of the disc and release.
- 6 | Click and hold the left mouse button at the top of the cup and drag the line to the bottom of the cup and release.



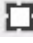


Optos *Advance*TM Measuring Cup to Disc Ratio



- 7 | The ratio will be calculated once both lines are drawn. You may draw your lines horizontally, vertically, or diagonally.



- 8 | Lines may be adjusted by clicking and dragging the  at their ends.
- 9 | Your annotation will be saved on your image.
Note: A draft presentation is automatically saved when you add annotations and measurements to an image.

Deleting Annotations

- 1 | To delete an annotation, right click on an annotation square and select **Delete**.

