



Optos *Advance*™ Comparing Prior Images



Contents

Purpose	1
Viewing Prior Studies	1
Changing the Prior Image	1
Comparing More than Two Visits.....	2
Making Timeline Visible.....	3

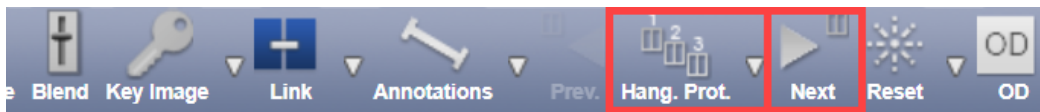
Purpose

This document will provide guidance on how to compare prior images. *OptosAdvance* will automatically compare today's studies and the first prior study by selecting the correct stage of the Hanging Protocols. If you want to compare more than these two studies, follow these instructions.

Viewing Prior Studies

If there are prior studies for the patient, you can compare today's images with the first prior image set side-by-side by doing one of the following:

- Clicking the **Next** button on the toolbar within *OptosAdvance*
- Pressing the next arrow on your keyboard
- Manually selecting the stage by clicking the Hanging Protocols icon and choosing stage
 - Prior stage is marked by an asterisk (*)



Changing the Prior Image

If you want to change the image that you are viewing in a viewport to a different prior image:

- 1 | Click on the **All** icon in the top right of the screen
- 2 | Drag, and drop the desired image from an alternate date of service into the desired viewport

Note: A timeline with all prior dates of service should also be visible at the top of your screen from which you may also drag and drop. Once you drag the date into the viewport, the left-hand series of image thumbnails reflect that date of service. Drag and drop the desired image into the viewport. Click on OD or OS from the toolbar to display correct image laterality. If you do not see the timeline, instructions are found at the end of this document to assist.

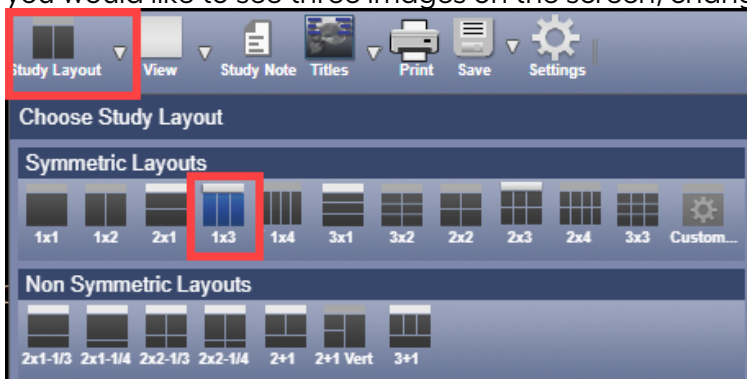


Optos *Advance*TM Comparing Prior Images



Comparing More than Two Visits

- 1 | Change the **Study Layout** on the toolbar to the number of images you want to view. Click on the arrow beside **Study Layout** to view the choices available. For example, if you would like to see three images on the screen, change the study layout to 1x3.



- 2 | Click the **All** icon at the top right of the screen to display the Extended Patient Timeline.
- 3 | Drag and drop any of the thumbnail images to one of the viewports as outlined in [Changing the Prior Image](#).

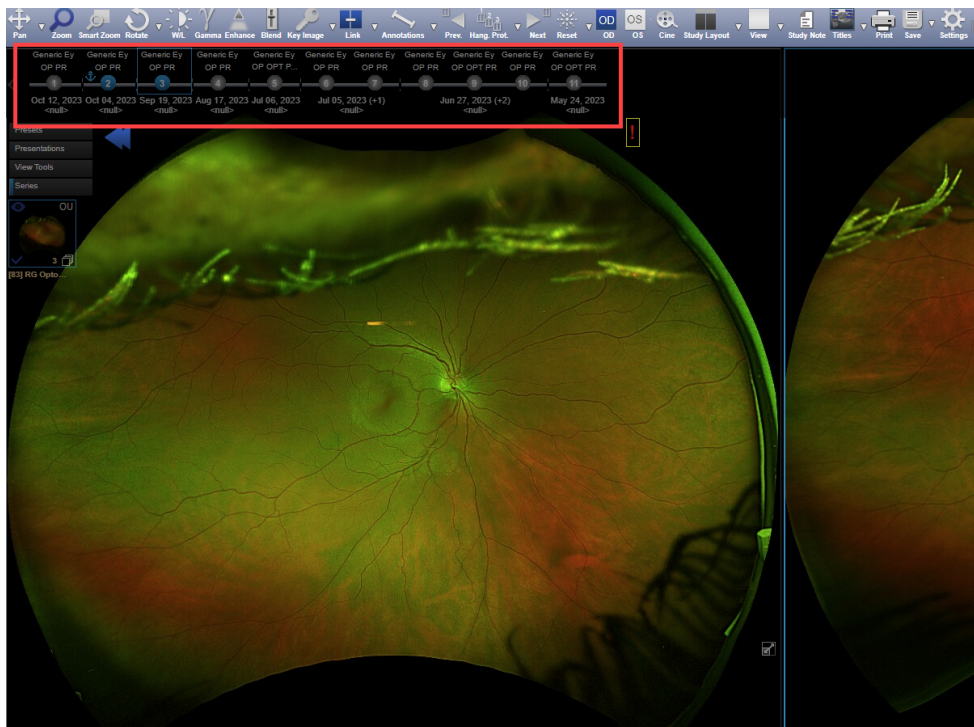


Optos*Advance*™ Comparing Prior Images



Making Timeline Visible

When prior studies exist, a timeline should appear in the upper-left corner, as shown below.



If the timeline does not appear, but priors do exist, it has been collapsed. Follow the step below to make the timeline visible:

- 1 | Click the blue down arrow button in the upper right corner below the Optos*Advance* logo.

